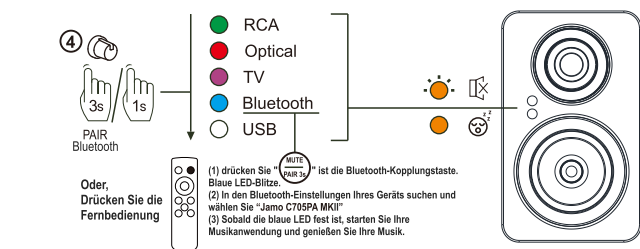
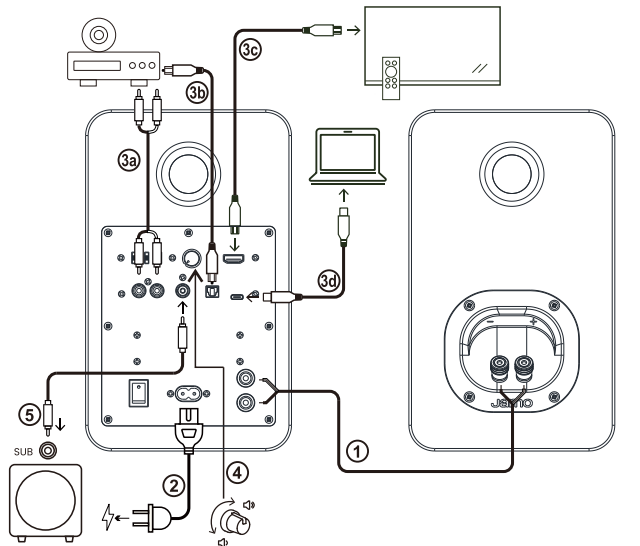


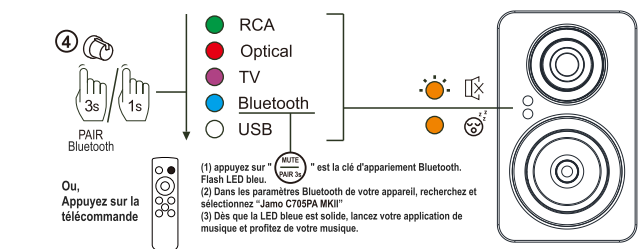
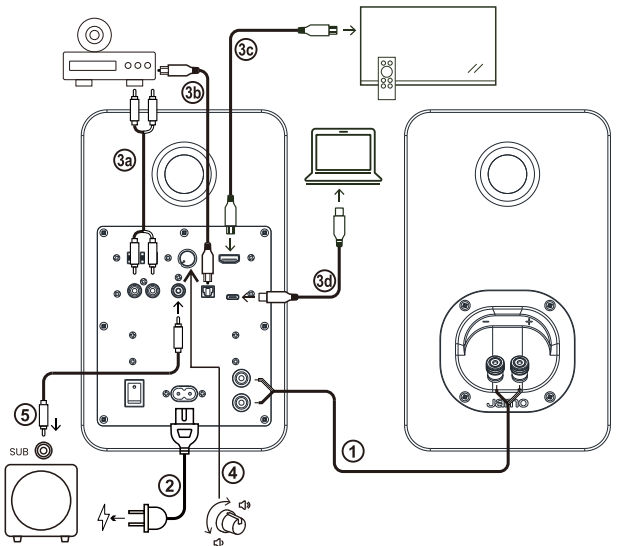
SCHNELLSTARTANLEITUNG



Oder, Drücken Sie die Fernbedienung

(1) drücken Sie "PAIR" ist die Bluetooth-Kopplungstaste. Blaue LED-Blitzes.
 (2) In den Bluetooth-Einstellungen Ihres Geräts suchen und wählen Sie "Jamo C705PA MKII"
 (3) Sobald die blaue LED fest leuchtet, starten Sie Ihre Musikanwendung und genießen Sie Ihre Musik.

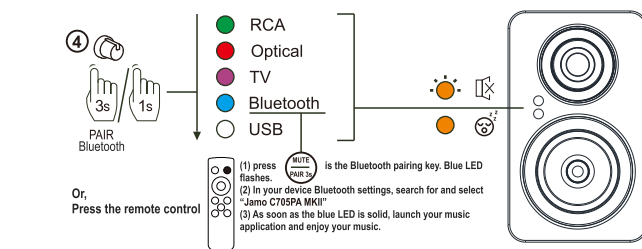
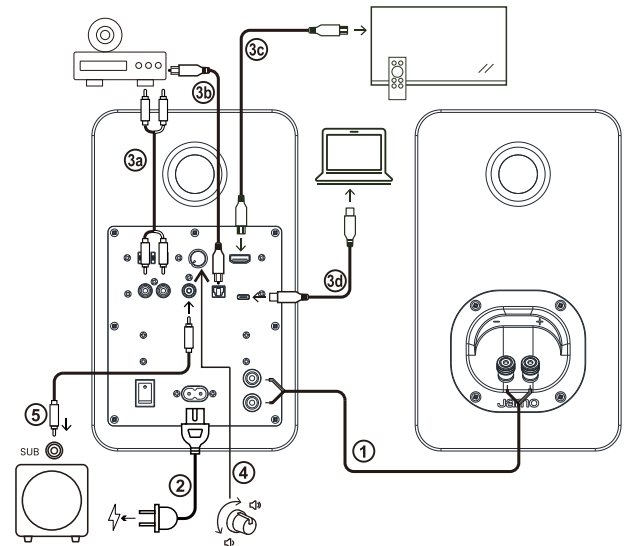
GUIDE DE DÉMARRAGE RAPIDE



Ou, Appuyez sur la télécommande

(1) appuyez sur "PAIR" est la clé d'appariement Bluetooth. Flash LED bleu.
 (2) Dans les paramètres Bluetooth de votre appareil, recherchez et sélectionnez "Jamo C705PA MKII"
 (3) Dès que la LED bleue est solide, lancez votre application de musique et profitez de votre musique.

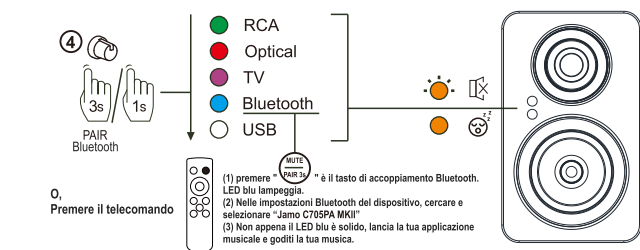
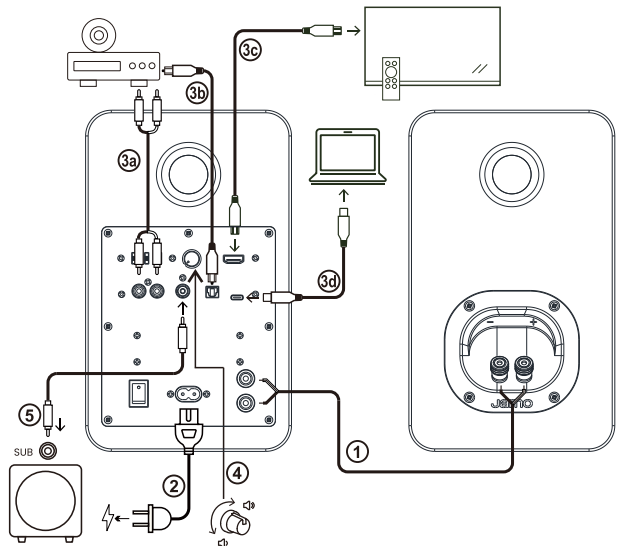
QUICK START GUIDE



Or, Press the remote control

(1) press flashes. "PAIR" is the Bluetooth pairing key. Blue LED flashes.
 (2) In your device's Bluetooth settings, search for and select "Jamo C705PA MKII"
 (3) As soon as the blue LED is solid, launch your music application and enjoy your music.

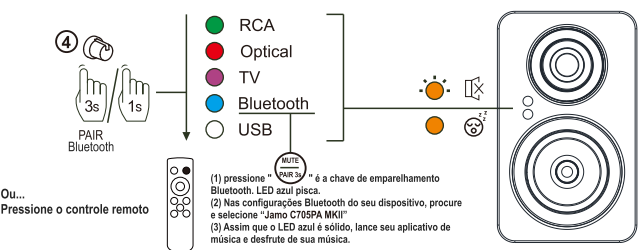
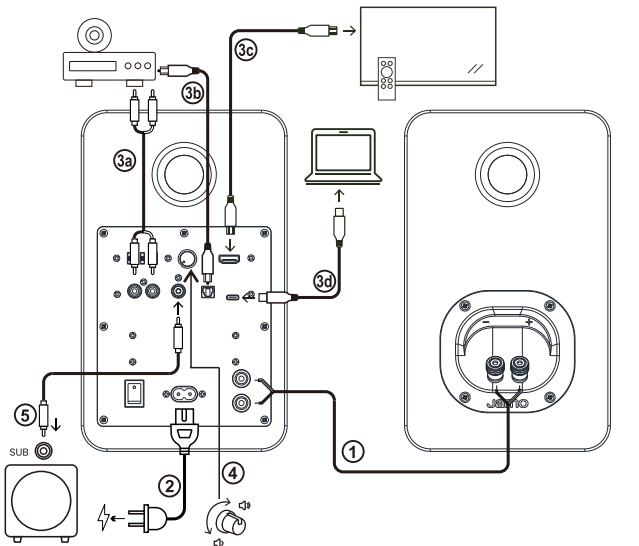
GUIDA RAPIDA ALL'AVVIO



O, Premere il telecomando

(1) premere "PAIR" è il tasto di accoppiamento Bluetooth. LED blu lampeggia
 (2) Nelle impostazioni Bluetooth del dispositivo, cercare e selezionare "Jamo C705PA MKII"
 (3) Non appena il LED blu è solido, lancia la tua applicazione musicale e goditi la tua musica.

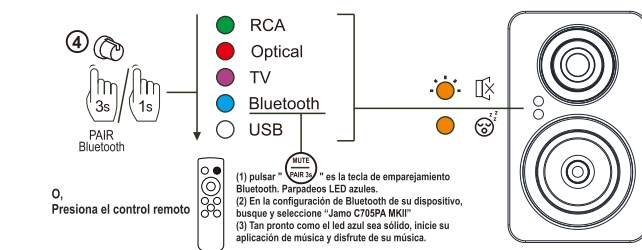
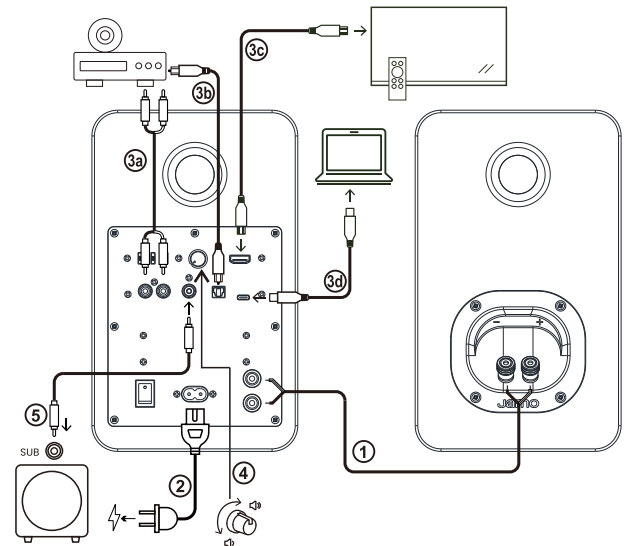
GUIA DE INÍCIO RÁPIDO



Ou... Pressione o controle remoto

(1) pressione "PAIR" é a chave de emparelhamento Bluetooth. LED azul pisca.
 (2) Nas configurações Bluetooth do seu dispositivo, procure e selecione "Jamo C705PA MKII"
 (3) Assim que o LED azul é sólido, lance seu aplicativo de música e desfrute de sua música.

GUÍA DE INICIO RÁPIDO



O, Presiona el control remoto

(1) pulsar "PAIR" es la tecla de emparejamiento Bluetooth. Parpadeo LED azules.
 (2) En la configuración de Bluetooth de su dispositivo, busque y seleccione "Jamo C705PA MKII"
 (3) Tan pronto como el led azul sea sólido, Inicie su aplicación de música y disfrute de su música.